

BD.RPC.5032.4.2.2023.SG

According to the distribution list

Notice to Skippers no. 4.2 / 2023

Pursuant to Art. 14 1(4) of the Act of July 20, 2017. - Water Law
(Journal of Laws of 2022, item 2625 as amended).
and Art. 43 (6) of the Act of December 21, 2000 on inland navigation
(Journal of Laws of 2022, item 1097, as amended).

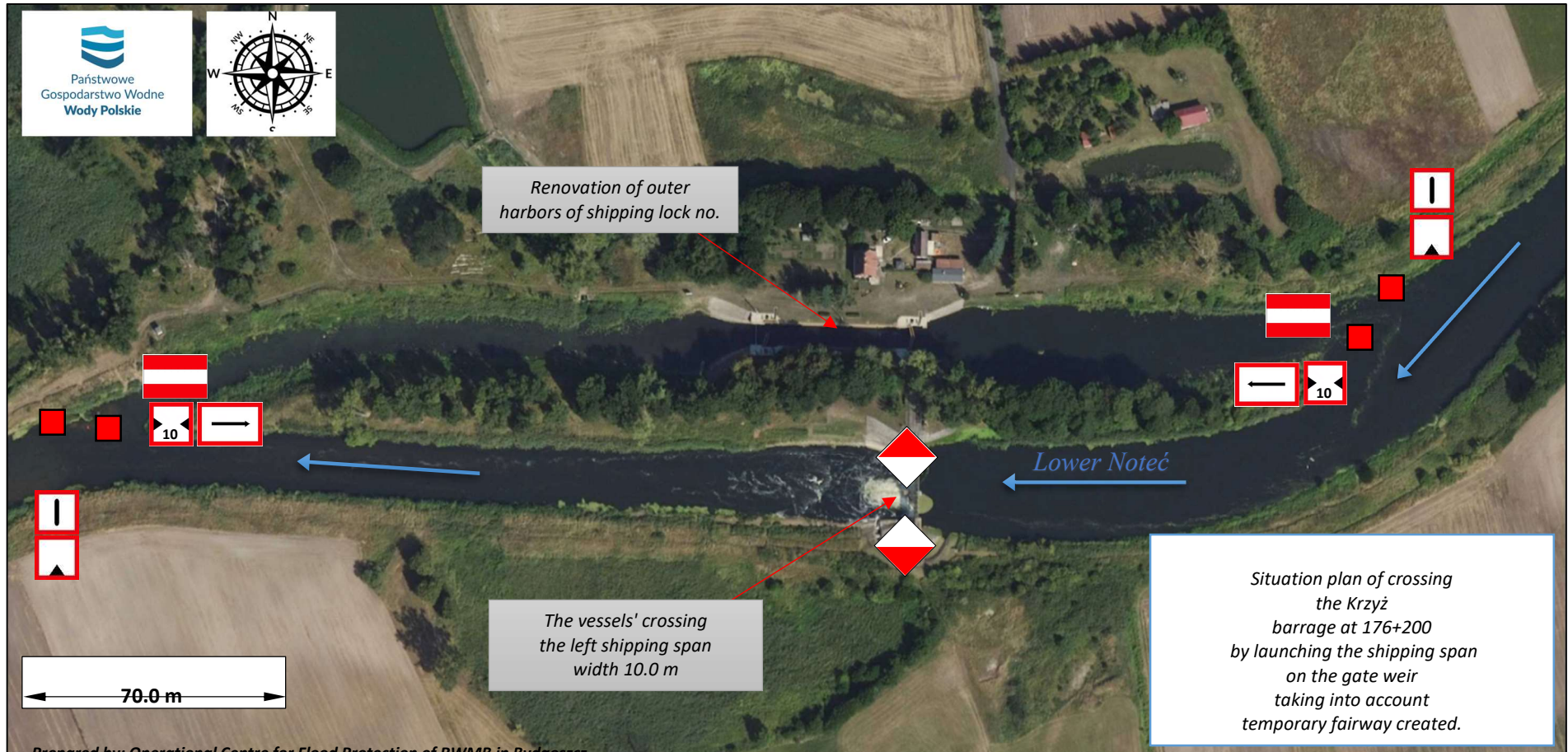
**State Water Holding Polish Waters
Regional Water Management Board in Bydgoszcz**

informs that according to Notice to Skippers no. 4/2023 of April 14 , this year, the Lock no. 22 Krzyż at km 176+200 of the waterway of the Lower Noteć River, on the Vistula - Oder waterway junction, will remain out of operation until July 10, 2023, due to the commencement of the task entitled: "Renovation of outer harbors on the Krzyż Lock". The current condition of the lock does not allow vessels to cross in both directions.

However, as a result of suitable hydrological conditions, from April 28, 2023 until further notice, it is possible to cross via the weir channel and the shipping span in operation. When crossing the weir span, extreme caution should be exercised by following the appropriate shoreline and floating navigational markings displayed as per the developed navigational markings plan attached as Appendix no. 1.

The transit depth in the additional fairway on April 28, 2023 is oscillating at **110 cm** with a water level of **85 cm** at the SW Krzyż WD water gauge. Current water levels are available at:
<https://hydro.imgw.pl/#station/hydro/152160010>

In order to obtain detailed information on shipping conditions, please contact from Monday to Friday, from 7:00 a.m. to 3:00 p.m. the RWMB in Bydgoszcz (tel. +48 532 033 484) or consult the news published on the website: bydgoszcz.wody.gov.pl in the "Notices to Skippers" tab.










Map 1. Krzyż barrage 176+200.

Prepared by: Operational Centre for Flood Protection of RWMB in Bydgoszcz

Key:

Based on the Regulation of the Minister of Infrastructure of 28 April 2003 (Journal of Laws 2003.212.2072)
on shipping regulations for inland waterways.

No.	Sign symbol	Sign pattern	The meaning of the sign	Notes
1.	B. 8		Extreme caution must be exercised	Located in front of the distribution dam at a suitable distance from the temporary fairway.
2.	C. 1		Limited depth	On the fairway leading to the span crossing there is a possibility of limited depth below the minimum transit depth parameter of 1.60 m.
3.	A. 10		Prohibition of crossing outside the clearance gauge specified by boards (via a weir)	Situated on the weir abutments defining the prohibition of crossing outside the gauge in the axis of the shipping span.
4.	C. 3		Limited lane width to 10.0 m (width of a shipping span)	Located in front of the distribution dam at a suitable distance from the temporary fairway.
5.	B. 1		Sail in the direction indicated by the sign only	Located at the fork of the SW Krzyż distribution dam in front of the distribution dam at a suitable distance from the temporary fairway.
6.	A. 1		No crossing	Prevents entry of vessels to the outer harbors of the repaired shipping lock.
7.	II. 1		Right boundary of the shipping lane	Marking the lane with navigational buoys in order to create the temporary fairway to cross the shipping span of the weir.

State Water Holding Polish Waters

Regional Water Management Board in Bydgoszcz

Al. Adama Mickiewicza 15, 85 - 071 Bydgoszcz

Tel: 52 33 91 100 | Fax: 52 33 90 200

e-mail: bydgoszcz@wody.gov.pl

www.wody.gov.pl